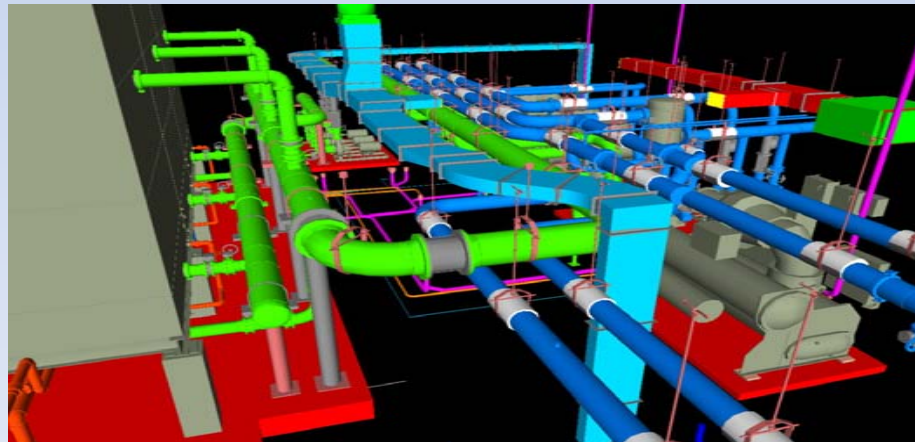


HEALTH AND SCIENCE BUILDING

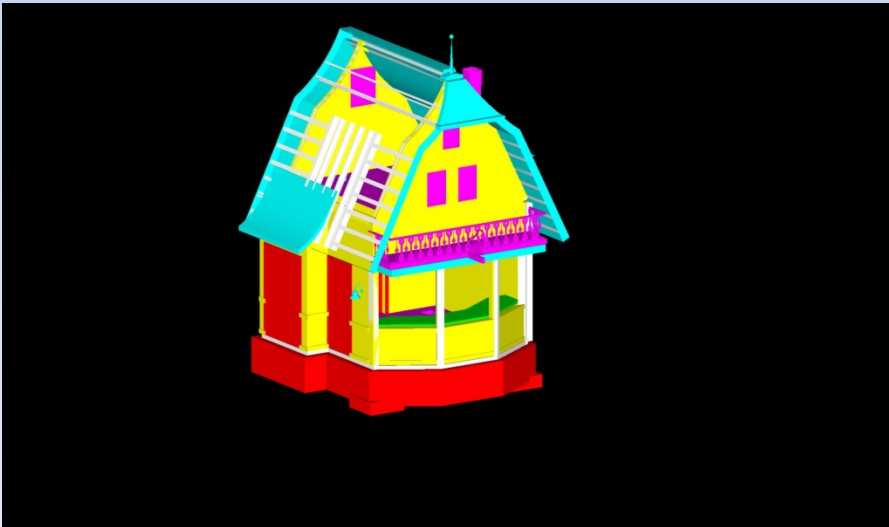
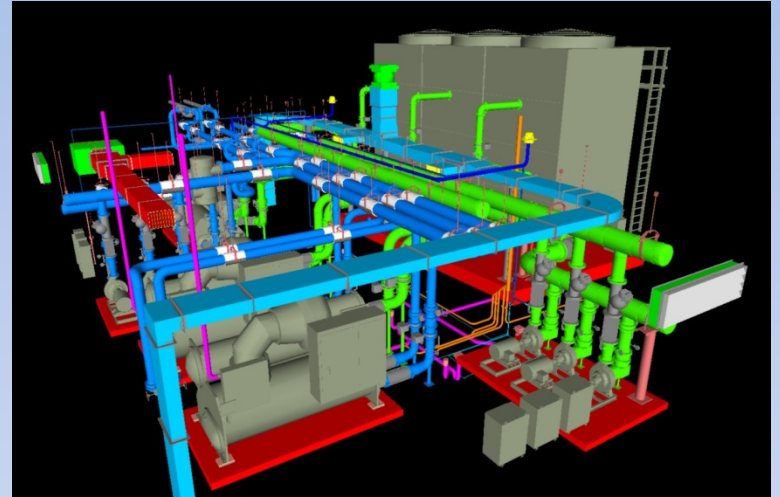


INTRODUCTION

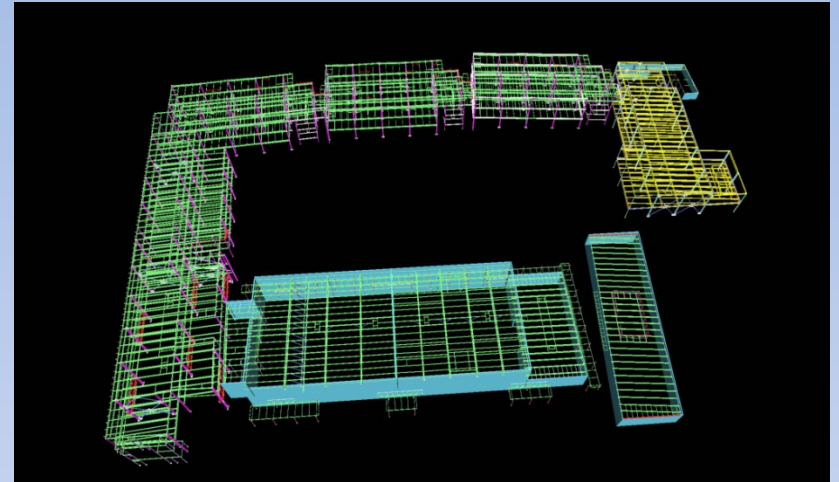
- **STEVEN PRISK**
- **CHRIS PUPPE**
- **XCEL MECHANICAL SYSTEMS**
- **BUILDING INFORMATION MODELING**

AGENDA

- COST SAVING
- BETTER PRODUCT
- LONG TERM

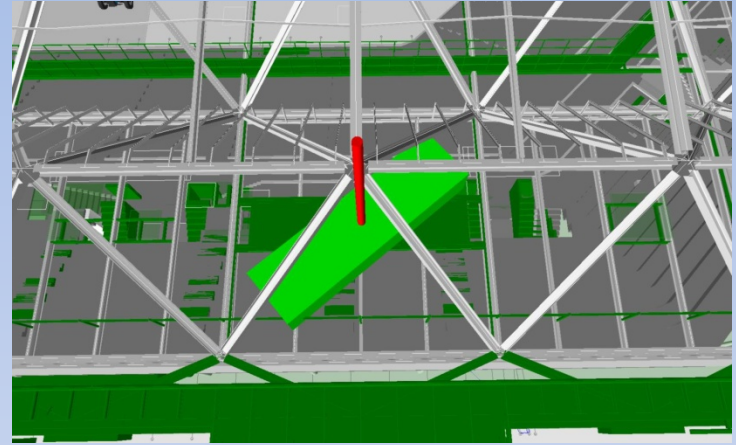
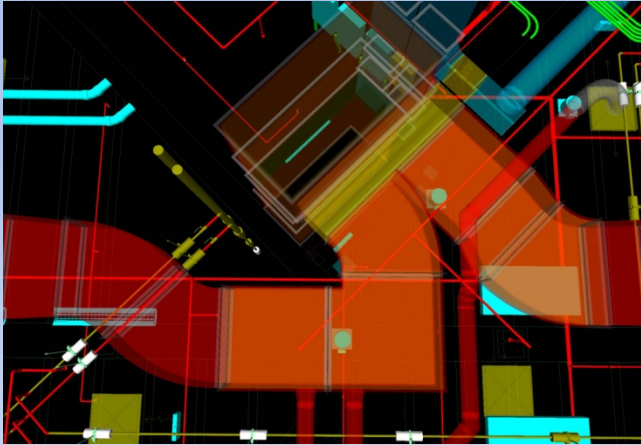


COST SAVINGS



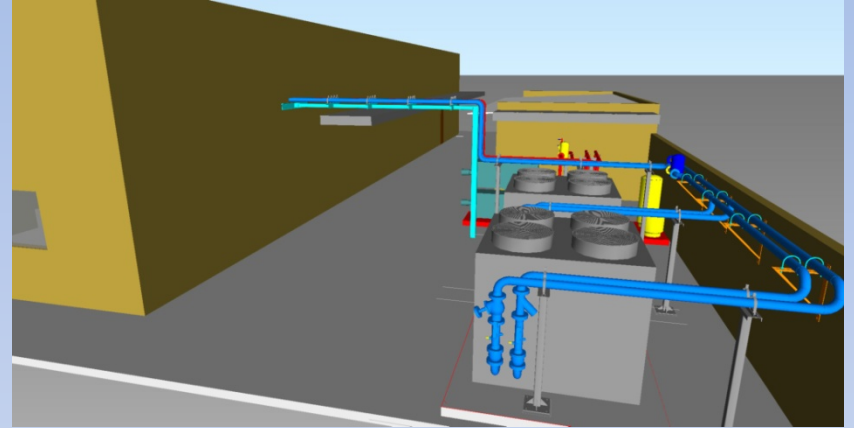
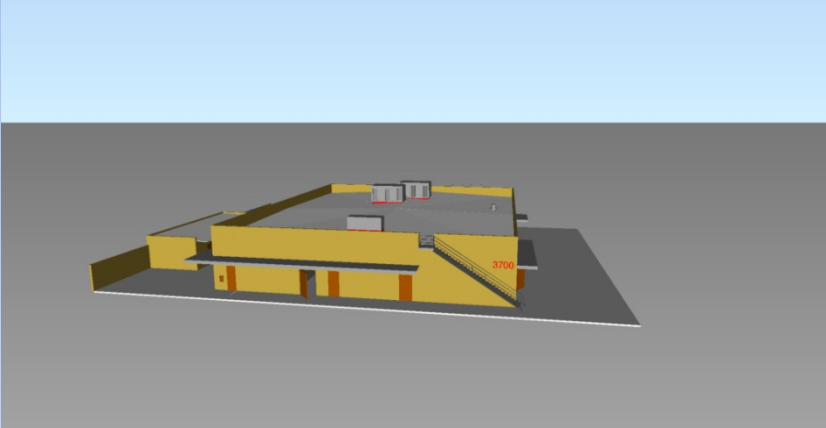
- **TWO BUILDINGS**
- **EARLY RFI'S**
- **QUICKER AND MORE ACCURATE COORDINATION**
- **FASTER INSTALLATION**
- **LESS WASTE**

BETTER PRODUCT



- NOT JUST A COORDINATION TOOL
- CLEARANCES
- FIRST CHOICE LOCATIONS

LONG TERM



- THE INFORMATION IN THE MODEL
- AS-BUILT
- REMODELS
- MAINTENANCE