

Accountability Reporting for the Community Colleges (ARCC)

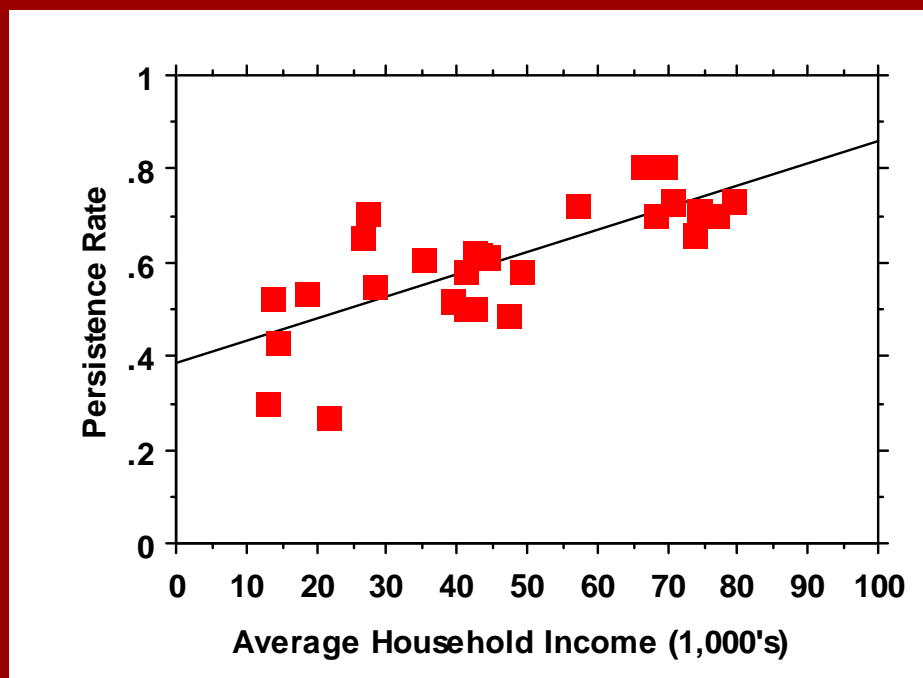
AB 1417 (Pacheco, 2004)

ARCC Background

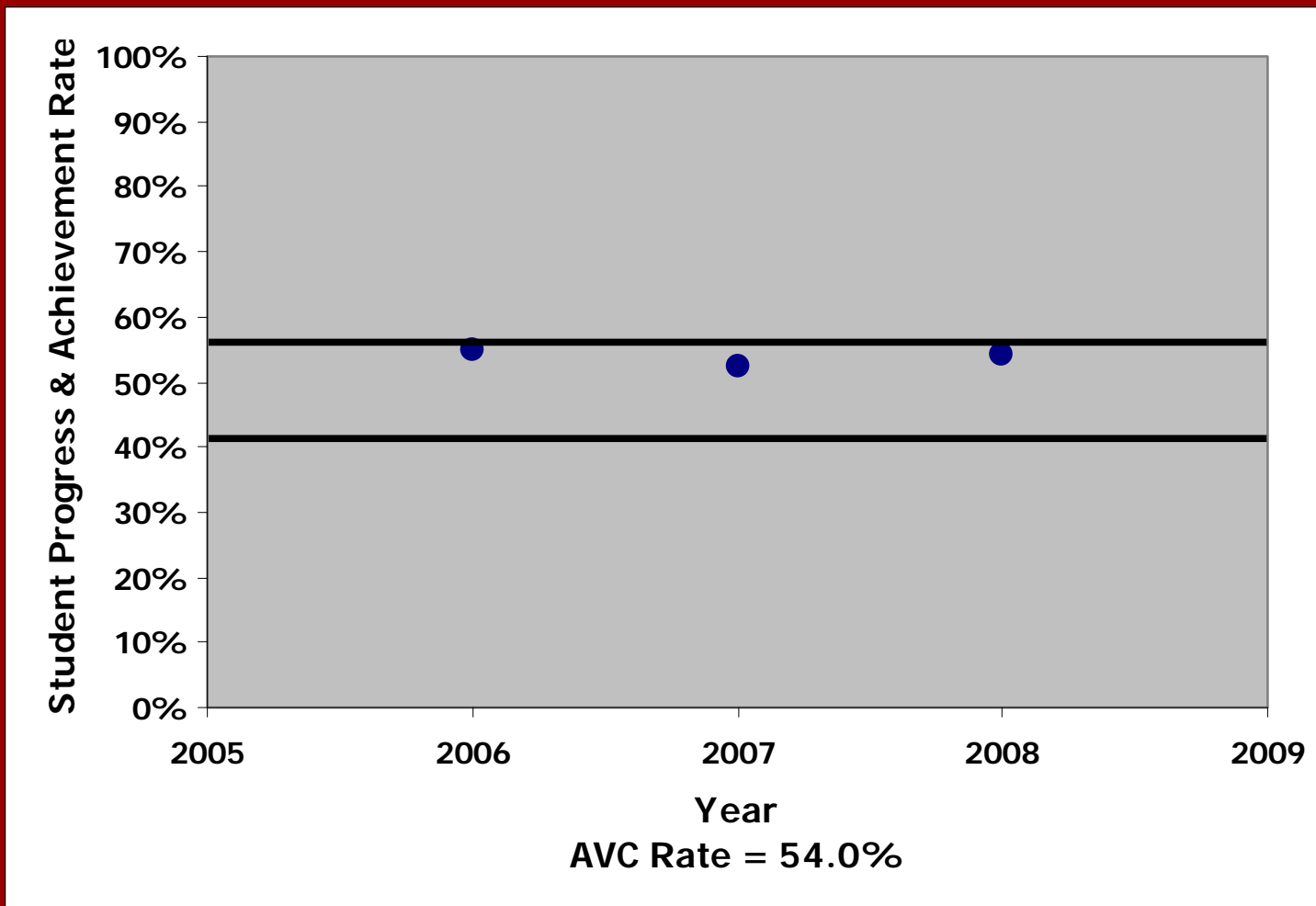
- Assembly Bill 1417 requires a yearly report on a set of performance indicators for the California Community Colleges (CCC).
- The report presents community college performance data that is aggregated and analyzed at two levels:
 - Individual college level (college core indicators) and,
 - Across the community college system (system wide indicators).

ARCC Peer Groups

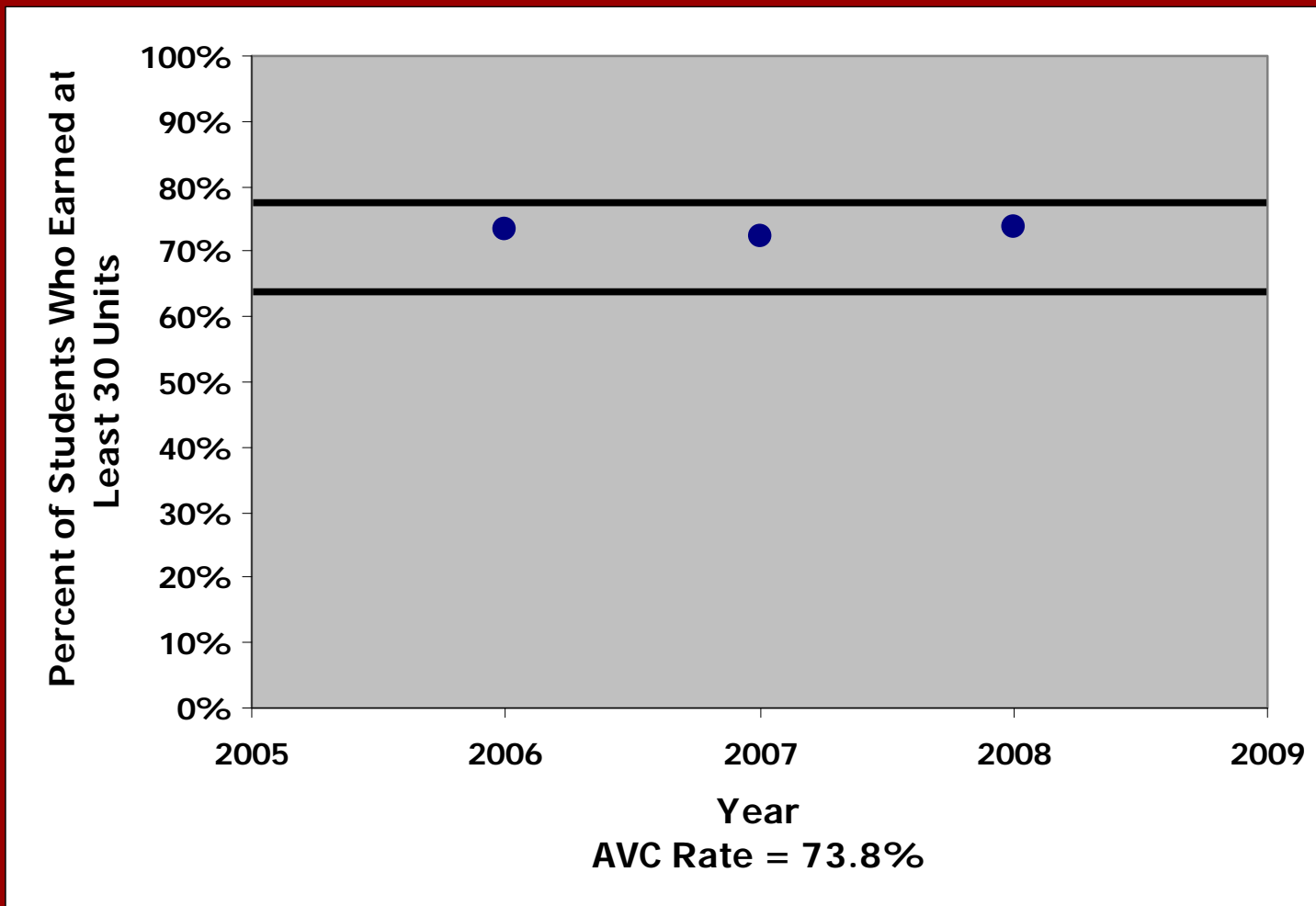
- Colleges are compared with similar colleges for each performance measure.
- Peer groups are formed statistically.
- Each of the six peer groups will likely be a different group of colleges.
- Hypothetical Example: Persistence Rate and Average Household Income.



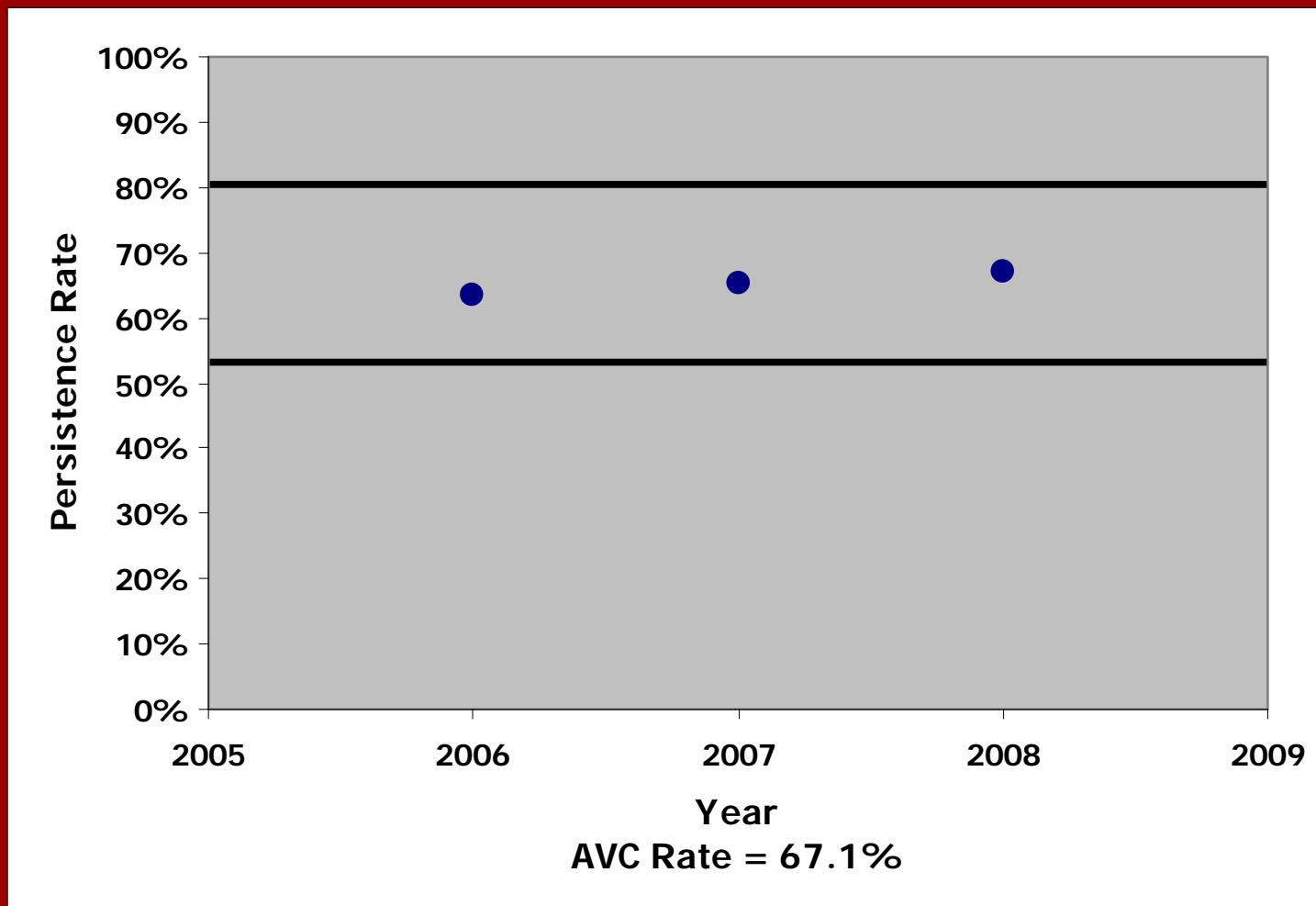
AVC Results: Student Progress and Achievement Rate



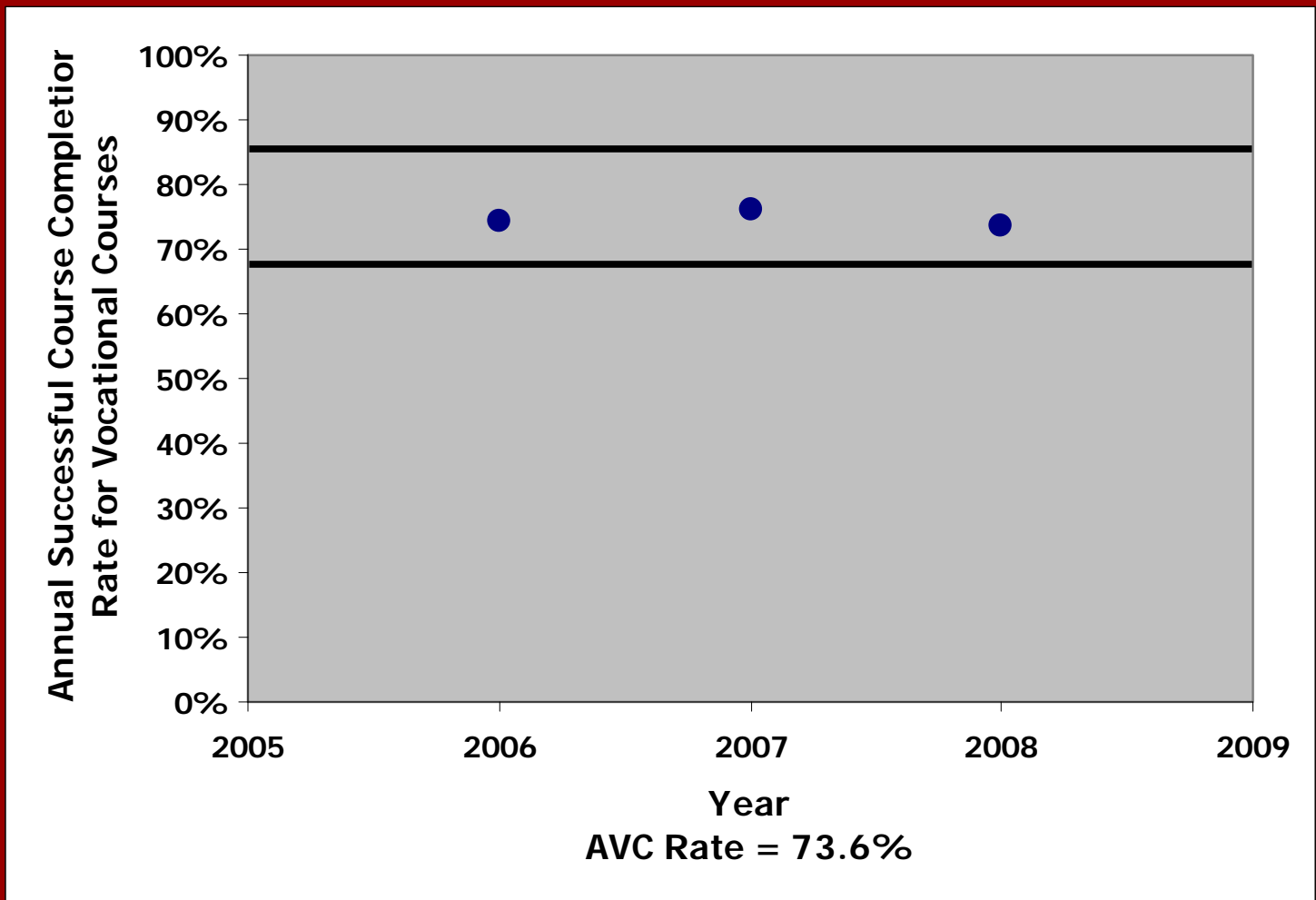
AVC Results: Percent of Students Who Earned at Least 30 Units



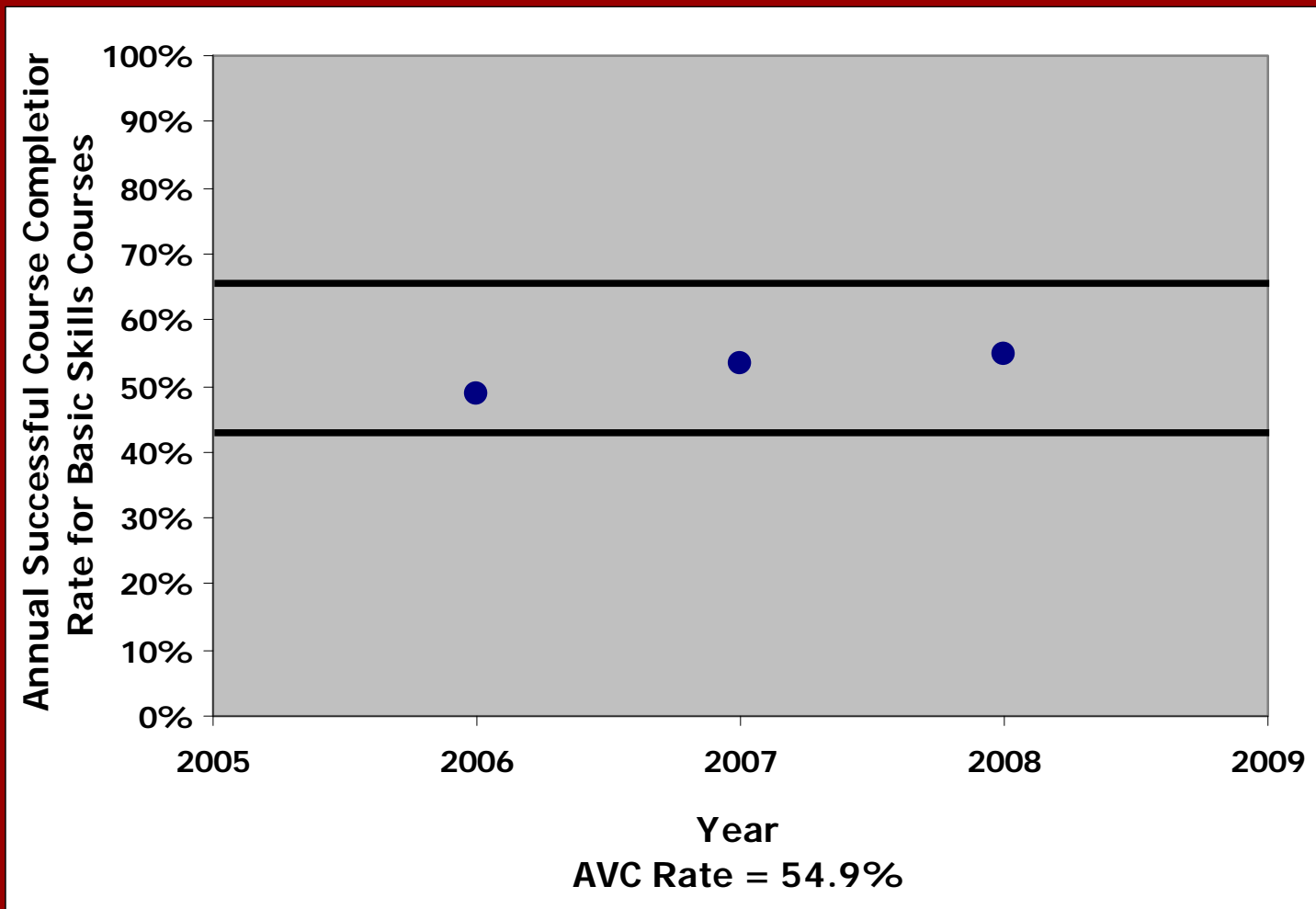
AVC Results: Persistence Rate (Fall to Fall)



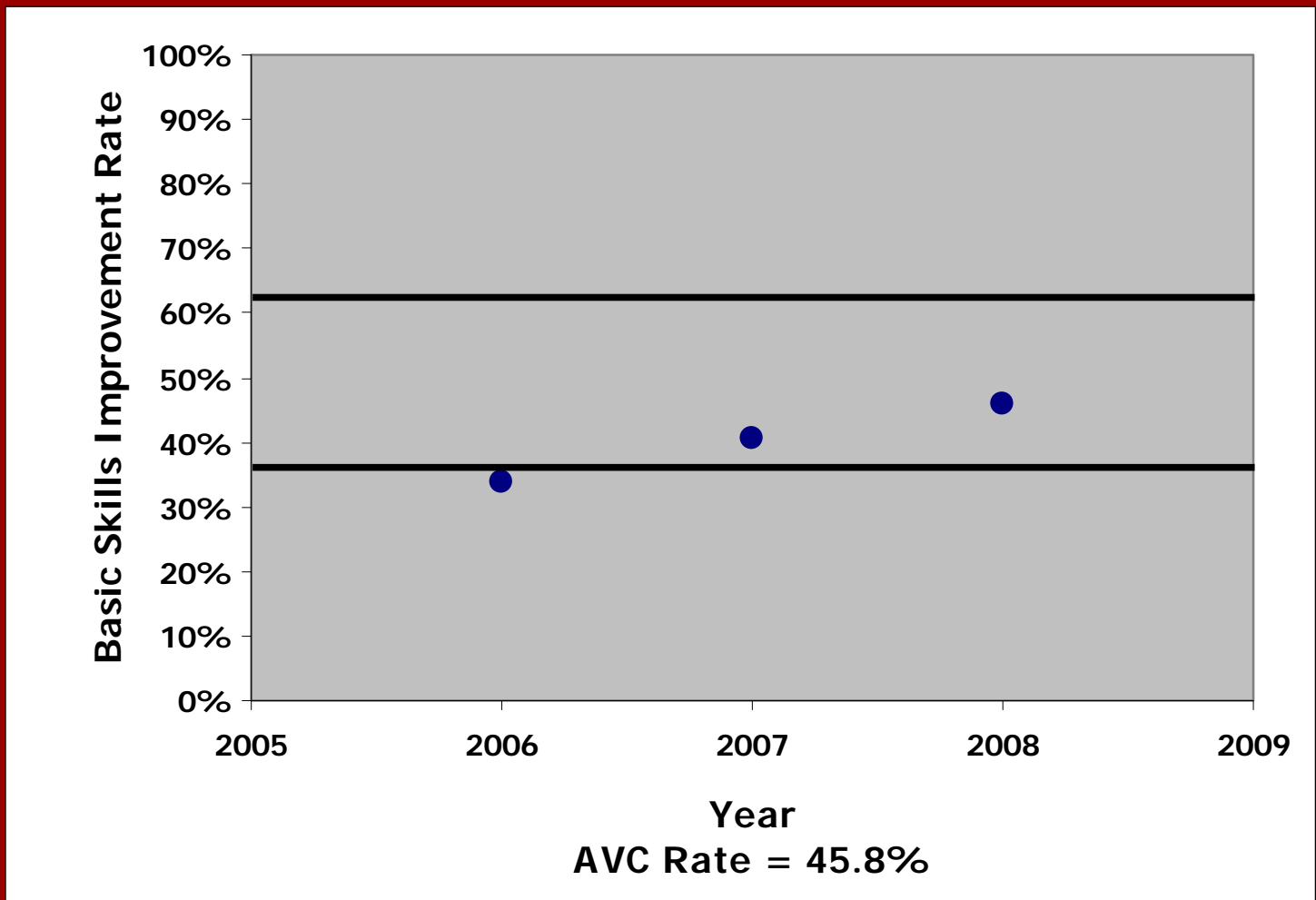
AVC Results: Annual Successful Course Completion Rate for Vocational Courses



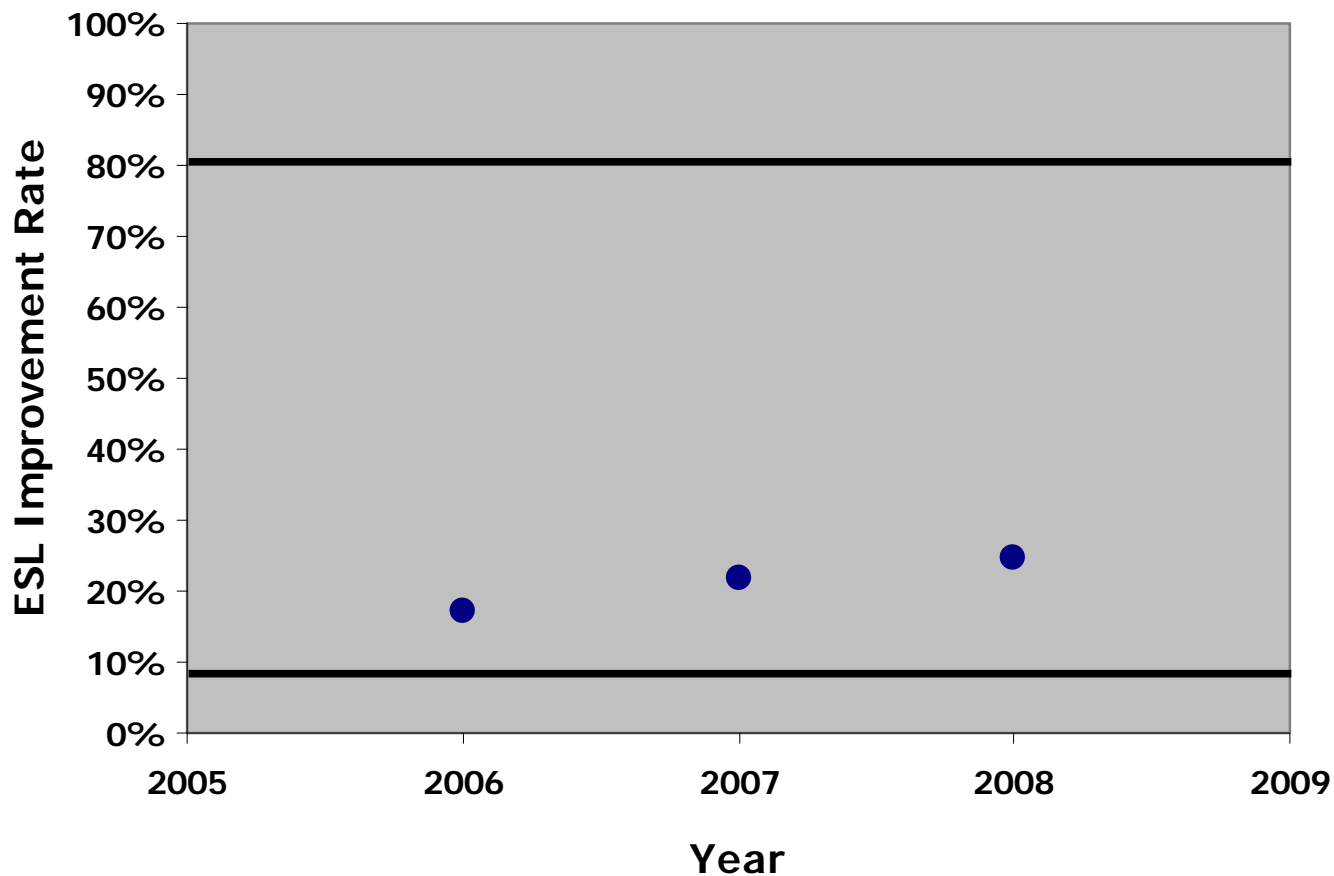
AVC Results: Annual Successful Course Completion Rate for Basic Skills Courses



AVC Results: Improvement Rates for Basic Skills Courses



AVC Results: Improvement Rates for ESL Courses



AVC Rate = 24.8%

Improvement Rates for ESL Courses

- MIS coding is directly related to poor improvement rates for ESL courses.
- CB21 coding indicates how many levels below college level a course is.
 - A = 1 level below
 - B = 2 levels below
 - C = 3 levels below
 - Y = more than 3 levels below
- Some of AVC's ESL courses are as much as 8 levels below college level English.
- If students make progress between levels 8 and 4 the CB21 coding will not capture this progress
- Therefore ARCC ESL improvement rates under report progress of students at Antelope Valley College.

Comments:

- **Cut Scores and an additional level of basic skills English have worked to improve success in English.**
- **Current placement cut scores are being evaluated for proper placement.**
- **The Office of Institutional Research has developed a program to help counselors work with basic skills students to make better course choices.**