

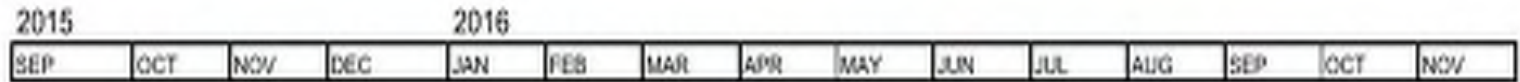


ANTELOPE
VALLEY
COLLEGE

Educational + Facilities Master Planning



Planning Timelines



Educational Master Plan



Title 5 Change (2007)

- T5 51008 Comprehensive Plan
- (a) The **governing board of a community college** district shall establish policies for, and approve comprehensive or master plans, which include academic master plans and long range master plans for facilities.

Accreditation

- Recent accreditation activities now “look for” an EMP as part of integrated planning

Purpose of EMP

- Address Educational & Support Services Needs
 - Facilities implications from enrollment growth projections
 - Mix of educational programs & match to service area

Purposes of EMP

- Review the learning environment for
 - Changes in teaching methodology & delivery of instruction
 - Potential new programs of instruction
 - Impacts of technology
- Serves as a long-term planning document
 - Perhaps revisited every six to seven years with the accreditation cycle

EMP is NOT...

- The same as a functional-level plan
 - Technology
 - Distance Education
 - Student Success
 - Student Equity

R

~~R~~

EMP Overview

1. Message from President
2. Introduction
3. College History & Overview
4. Mission, Vision, Values
5. Environmental Scan
 - A. External
 - B. Internal
6. Plan Assumptions
7. Opportunities for the Future
8. Projections for the Future Growth

Process

- Selection & Kick Off- September 2015
- Fall 2015
 - Data collection & analysis, preliminary findings presentation
- Spring 2016
 - Interviews
 - Presentations to Strategic Planning Committee & Campus
 - Open house sessions
 - Academic Senate presentation
 - Board presentation (June)

Data Collection

- External data, documents, research
- Recent College plans, research, projects, program reviews
- Questionnaire and structured interviews (faculty & academic deans)
- Email exchanges (faculty & academic deans)
- Exchange of information with Gensler (FMP)

Core Questions

1. How much additional instructional space will AVC need into the future?

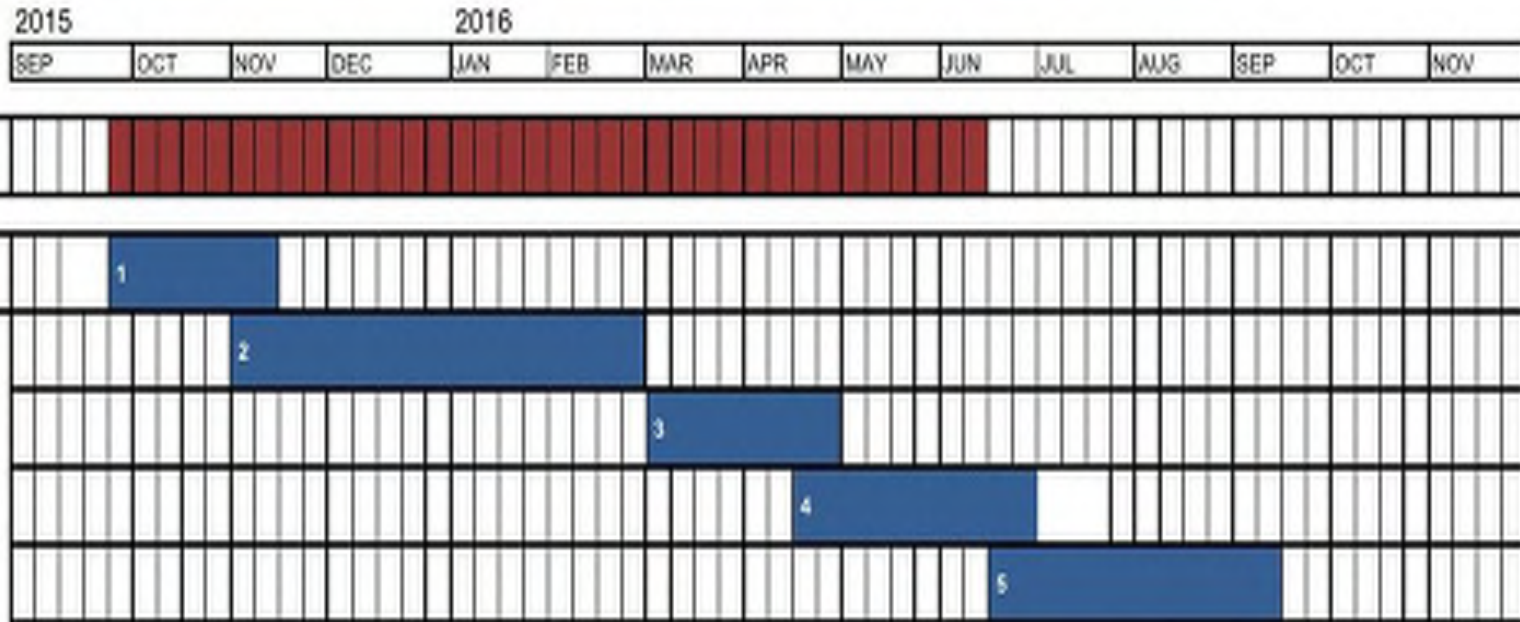
2. What might be the curriculum options to match labor market needs and transfer opportunities?

But, wait there is more.....

**Accreditation
considerations**

Facilities Master Plan

Planning Timelines




Process



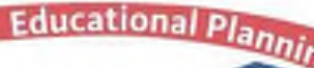
Discover



 Organize

 EMP
Coordination

 Visioning
Workshops

 Educational Planning

 Facilities Planning

Discover



1. Write and Post



2. Discuss and Report



3. Listen and Record

Analyze

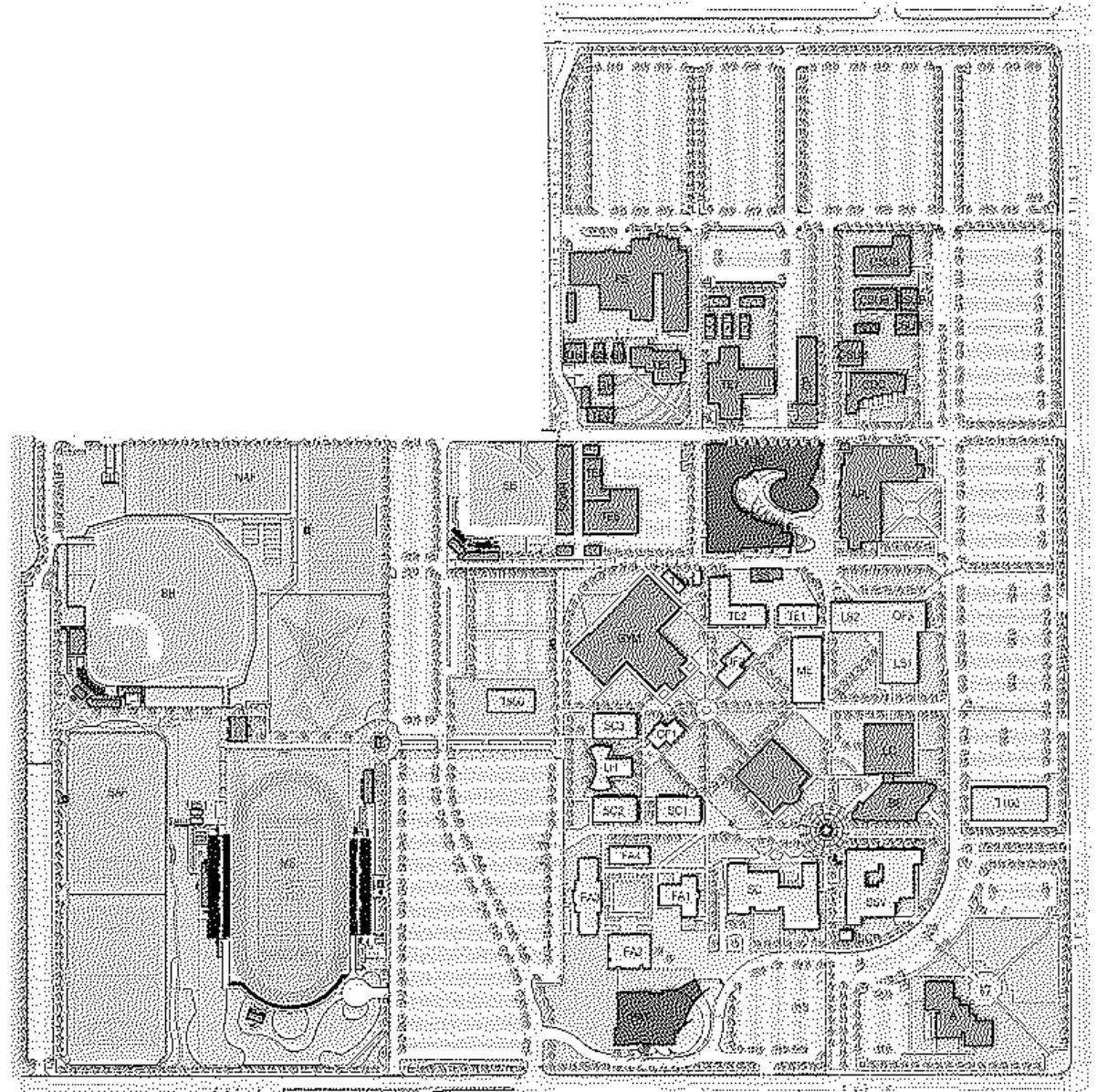


-  Assessments
-  Qualitative + Quantitative
-  Campus Input

Educational Planning

Facilities Planning

Analyze



Analyze



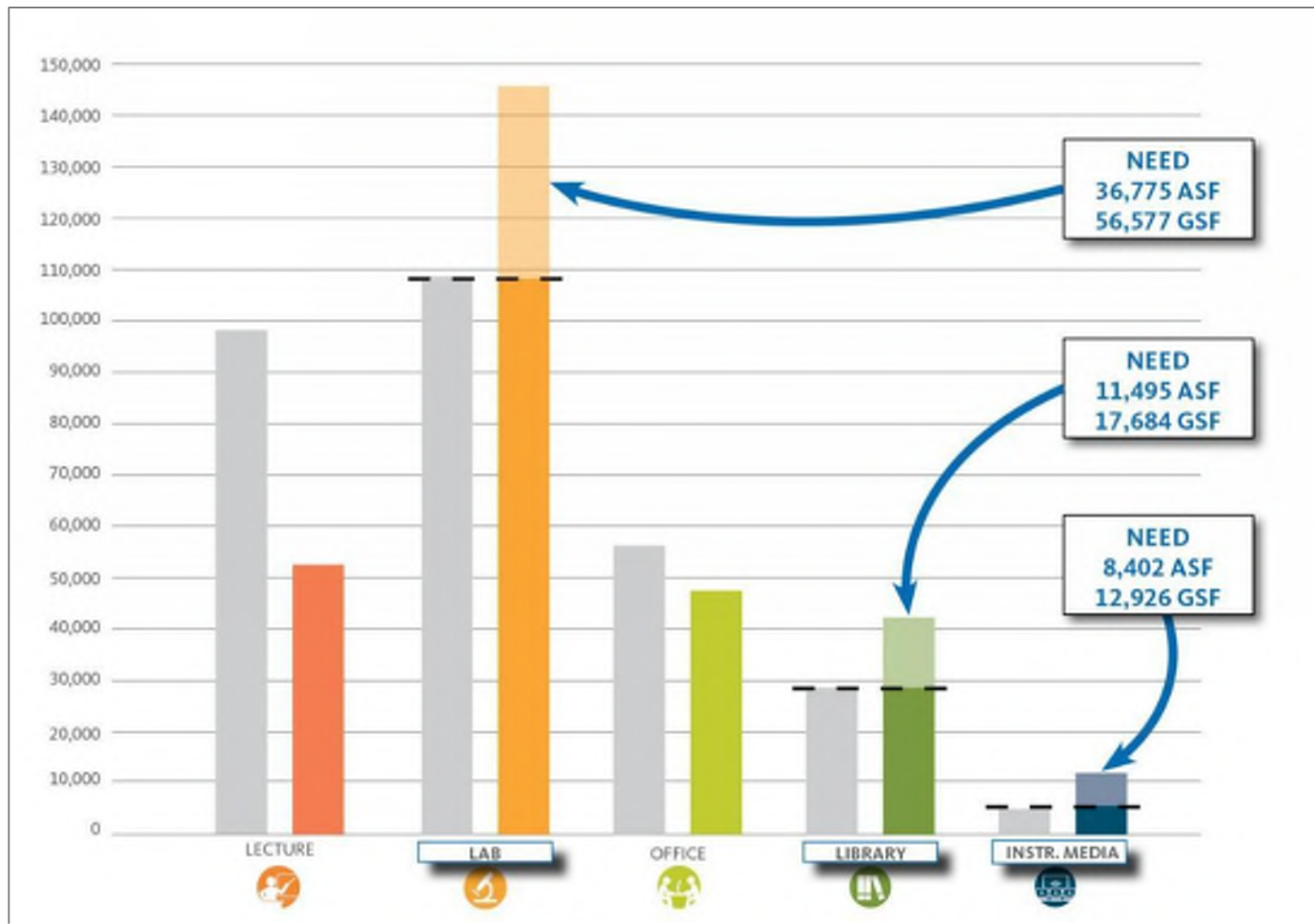
Analyze



Explore

EDUCATIONAL PLANNING DATA

- Enrollment Forecasts
- Program Data (FTES, WSCH)



Explore



FMP Parameters



Development Opportunities

Educational Planning

Facilities Planning

Explore

Opportunities



EXISTING BUILDING

- A ADMINISTRATION BUILDING
- BS BASEBALL STADIUM
- EE BUSINESS ED. HALL & OFFICES
- OC2 ONTARIO OPERA CENTER
- CP C. CENTRAL PLANT
- CUS5 CUS5 BARNESFIELD-ANTELORPE VALLEY
- FG FACILITIES SERVICES
- GH GREENHOUSE
- MS MERRILL CARPENTER MANALDEN STADIUM
- NAF NORTH ATHLETIC FIELDS
- OP3 OFFICES - TECHNICAL ED.
- SAP SOUTH ATHLETIC FIELDS
- SH SCHUBERT STADIUM
- SCAP3 SCARBOROUGH HIGH SCHOOL (AWLPHS)
- SS CAMPUS SUBSTATION
- TE3 TECHNICAL LAB
- TE4 EQUIPMENT BUILDING
- TE2 TECHNICAL ED.
- TE7 TECHNICAL ED.
- TE8 AUTO BODY

DEMOLITION

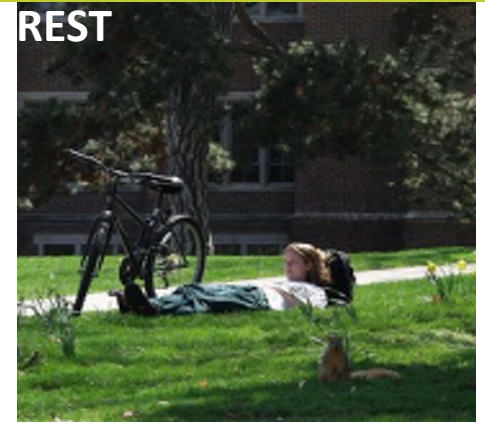
- FA1 FINE ARTS (ART 7 GALLERY)
- FA2 FINE ARTS (THEATRE)
- FA3 FINE ARTS (AUDIO & OFFICES)
- FA4 FINE ARTS
- FL LECTURE HALL
- LS1 LIBERAL STUDIES & OFFICES
- LS2 LIBERAL STUDIES
- ME MATH / ENGINEERING
- OF1 OFFICES - MATH / SCIENCE
- OF2 OFFICES - IT
- OP3 OFFICES - LANGUAGE ARTS & SOCIAL SCIENCE
- SQ STUDENT CENTER
- SC1 SCIENCE BUILDING 1
- SC2 SCIENCE BUILDING 2
- SC3 SCIENCE BUILDING 3
- SCP SOUTH CENTRAL PLANT
- SSV STUDENT SERVICES BUILDING
- TE1 TECHNICAL ED - ELECTRONICS
- TE2 WELLSFORD TECHNOLOGY
- TH06 ASSESSMENT OFFICE FOR STUDENTS WITH DISABILITIES
- TS00 FACULTY OFFICES
- TS00 FACULTY OFFICES
- TS01 FACULTY OFFICES
- TS02 NURSING SCIENCE
- TS03 SHERIFF'S ACADEMY
- TS04 SHERIFF'S ACADEMY
- TS05 HE OFFICES
- TS06 CONSTRUCTION OFFICE
- TS06 FIELD HOUSE - HOME
- TS01 FIELD HOUSE - VISITING

UNDER CONSTRUCTION

- HS HEALTH & SCIENCE BUILDING
- PA1 PERFORMING ARTS THEATRE



Explore



Explore

Sustainability Strategies



Recommend



-  Sequencing
-  Strategies
-  Scopes + Budgets

Educational Planning
Facilities Planning

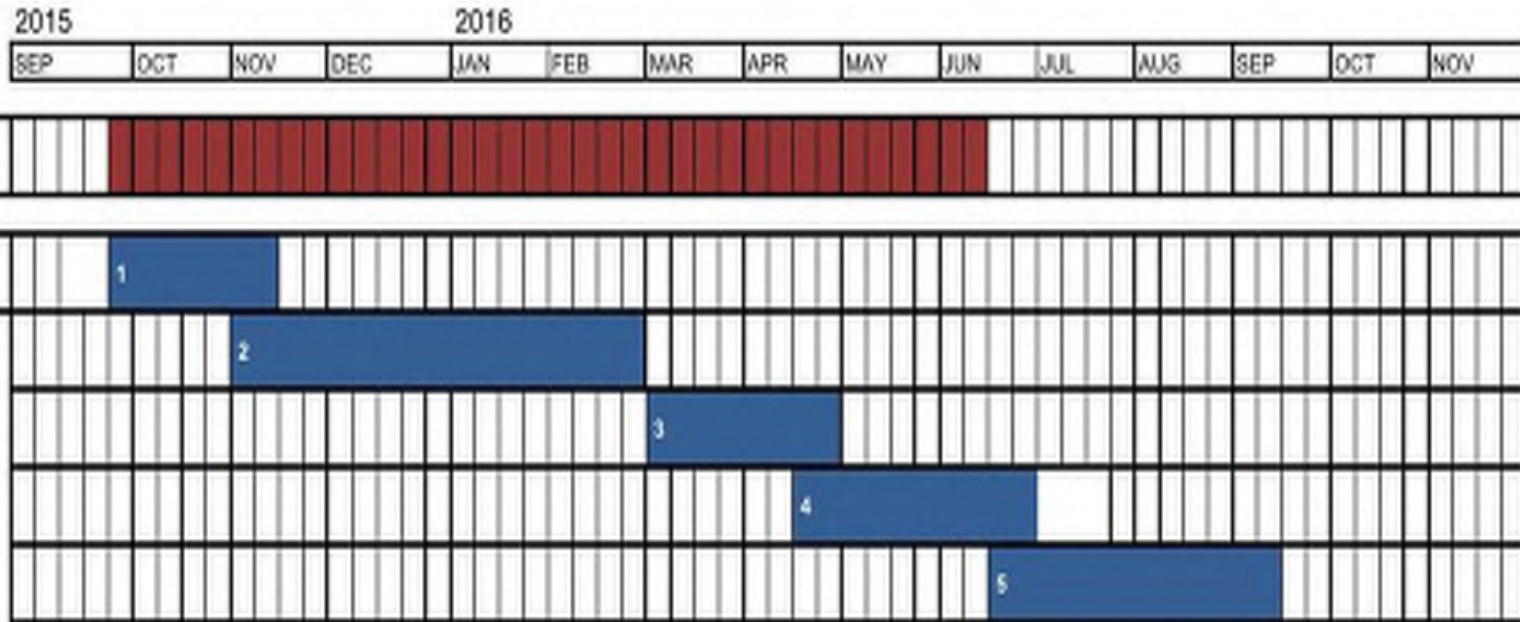
Document



-  Final Document
-  Capital Outlay Plan Coordination
-  Reviews + Approvals



Planning Timelines



STEP 1: Discover

Measures of
Success



STEP 1: Discover

Measures of Success

Integrated

Utilized

Data Driven

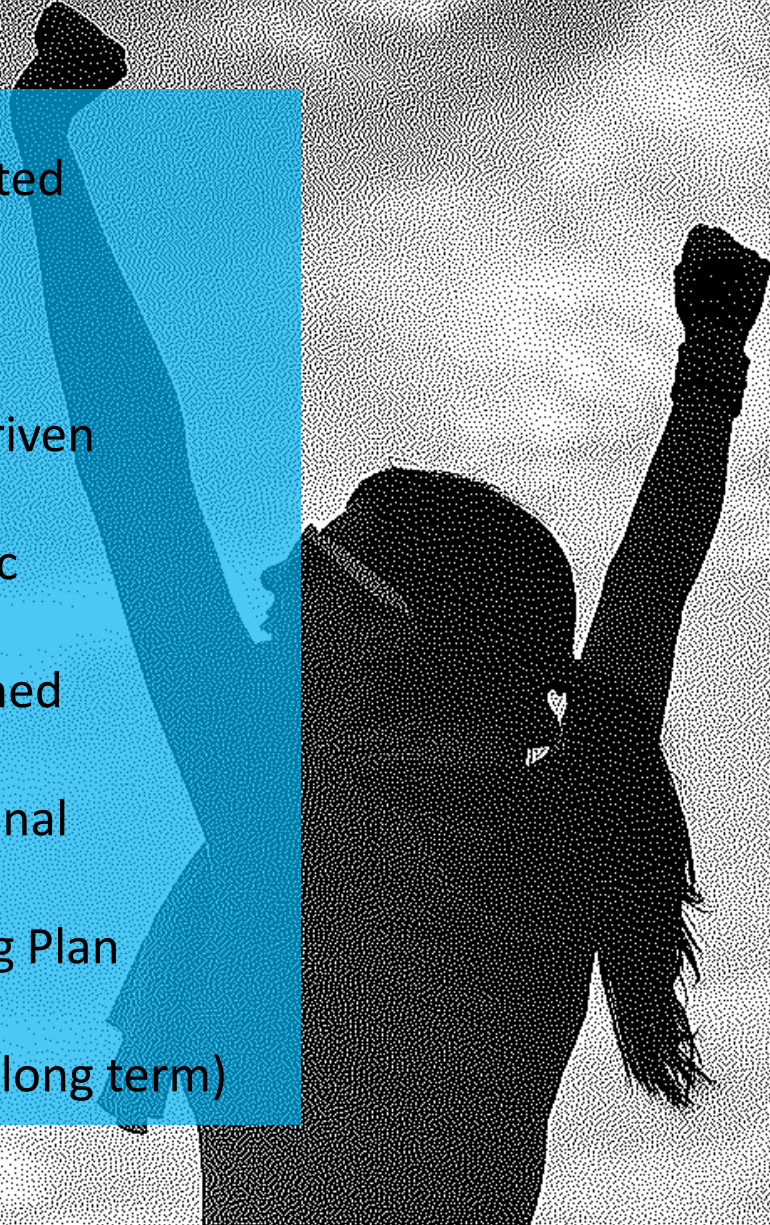
Realistic

Combined

Functional

Funding Plan

Vision (long term)



STEP 1: Discover



GOAL 1

To commit every area of the University to the reflective engagement of her Jesuit, Catholic, and humanistic Mission ideals.



GOAL 2

To educate and transform quality students in an enriched academic environment.



GOAL 3

To deepen the engagement of the entire university in the development of the whole person.



STEP 1: Discover

ACTIVITY 1:
Favorite / Least Favorite



ACTIVITY 1:
Biggest Issue

