

# Educational Master Plan

Internal Environmental Scan  
February 17, 2016

# EMP Overview

- Message from President
- Introduction
- College History & Overview
- Mission, Vision, Values
- Environmental Scan
  - External
  - Internal
- Plan Assumptions & Goals
- Opportunities for the Future
- Projections for the Future Program of Instruction

# Overarching Themes

- *How has the College responded to its external environment?*
- *How has the College implemented its mission?*

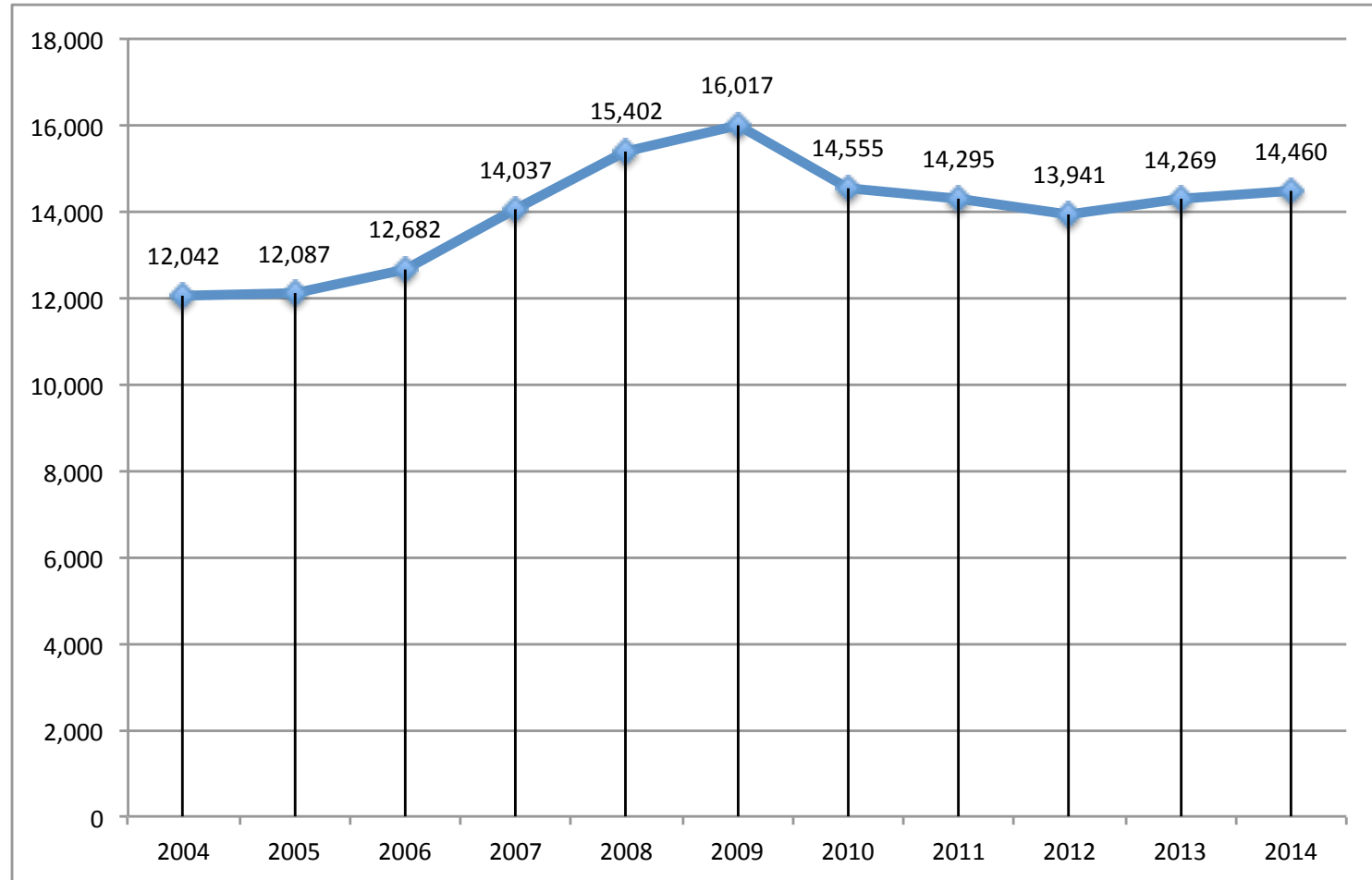
# Internal Scan

- Institution from Within (Trends)
- Programs Offered
- Current Program of Instruction, Fall 2014
- Scheduling Patterns, Fall 2014
- Students Who Attend the College (Trends)
  - Goals, Gender, Age Ranges, Ethnicity, Unit Load, Time of Attendance (see the Fact Books)
  - Placement Data (Trends)
  - Out of District Enrollments, Fall 2014
- Institutional Effectiveness (see Fact Books)

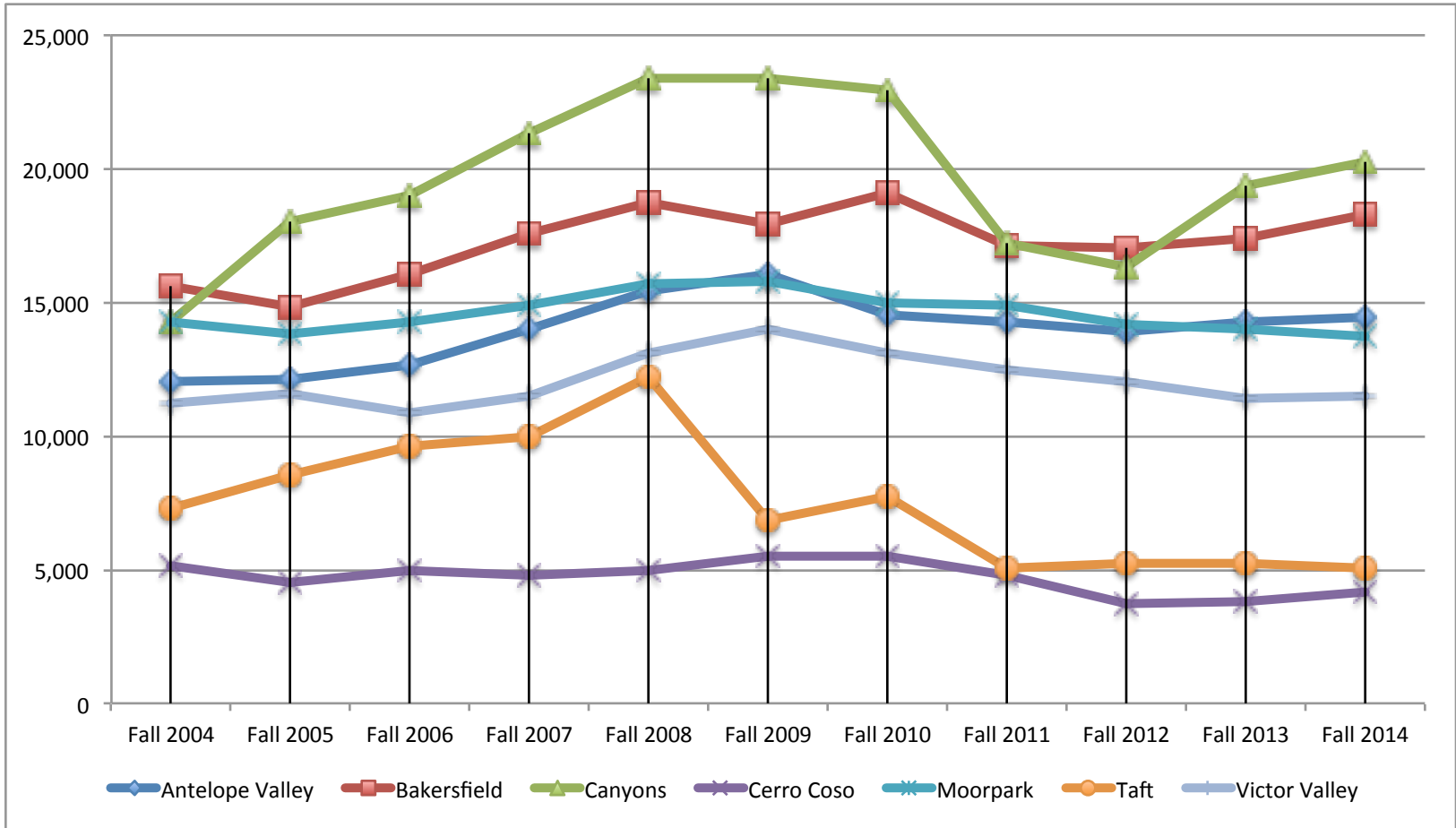
# Internal Scan (continued)

- Instructional Support Resources & Distinctive Academic Programs
- Non-instructional Resources that Support
  - Student Support Services
  - Library & Learning Resources
  - College Staffing
  - Budget
  - Technology
  - Space

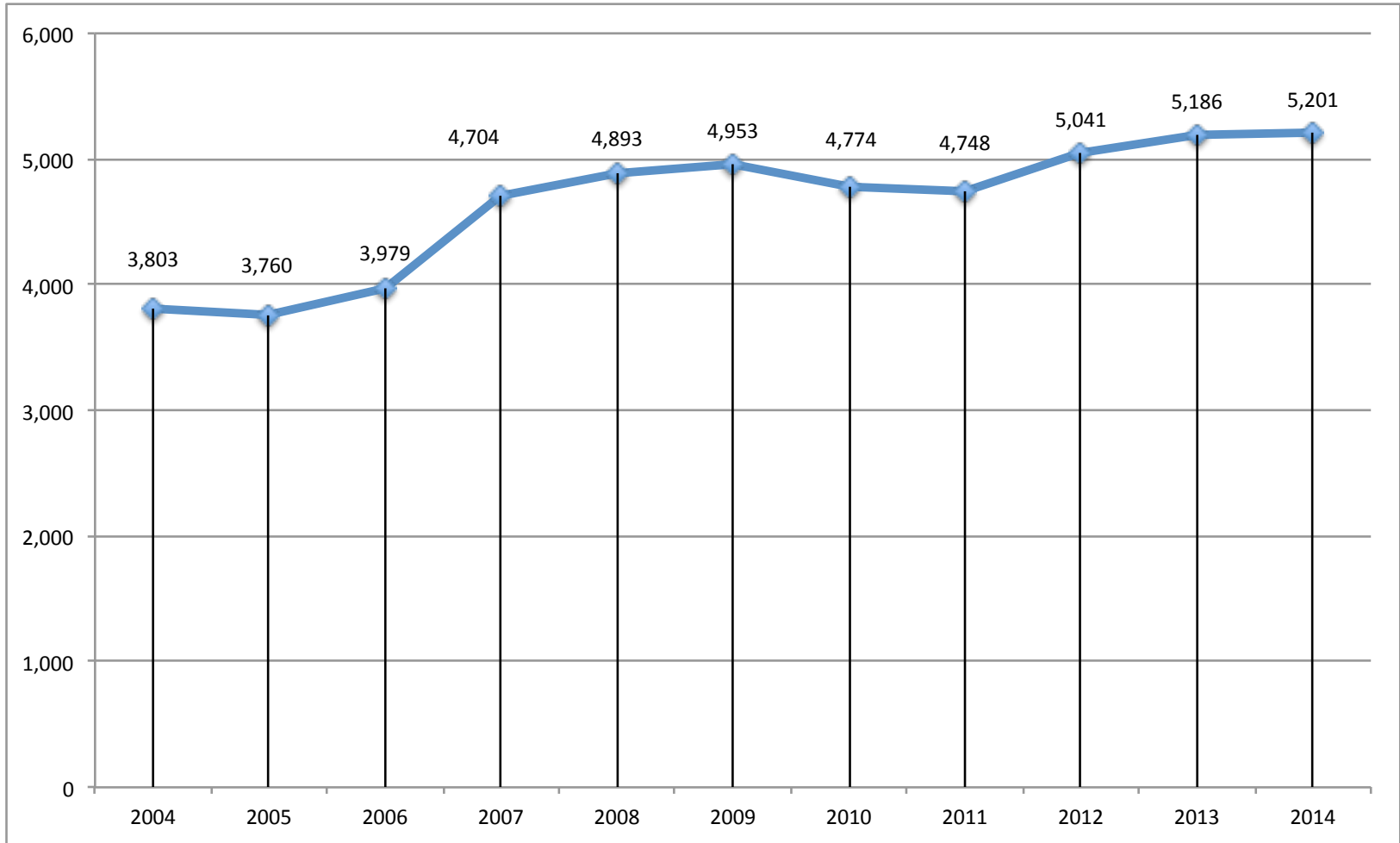
# AVC Headcount, Fall Terms



# Neighborhood Headcount Trends



# AVC FTES Trends, Fall Terms





# AVC Programs Authorized

<b>Category</b>	<b>Degrees</b>	<b>Certificates</b>	<b>Local Certificates</b>	<b>Totals</b>
Program Fields of Study	95	61	2	158
Career & Technical Education	57	59	2	118
Liberal Arts	38	2		40

*Note: Some fields of study are double counted as they offer a degree and a State certificate of achievement*

See Appendix C: Program Inventory and Awards 2010-11 to 2014-15



# Associate Degree for Transfer

Quartile	Category	Nbr. Colleges
4th	22 to 28 degrees ( <i>Antelope Valley College</i> )	28
3rd	19 to 21 degrees	26
2nd	15 to 18 degrees	27
1st	5 to 14 degrees	32
	<i>Total</i>	<i>113</i>



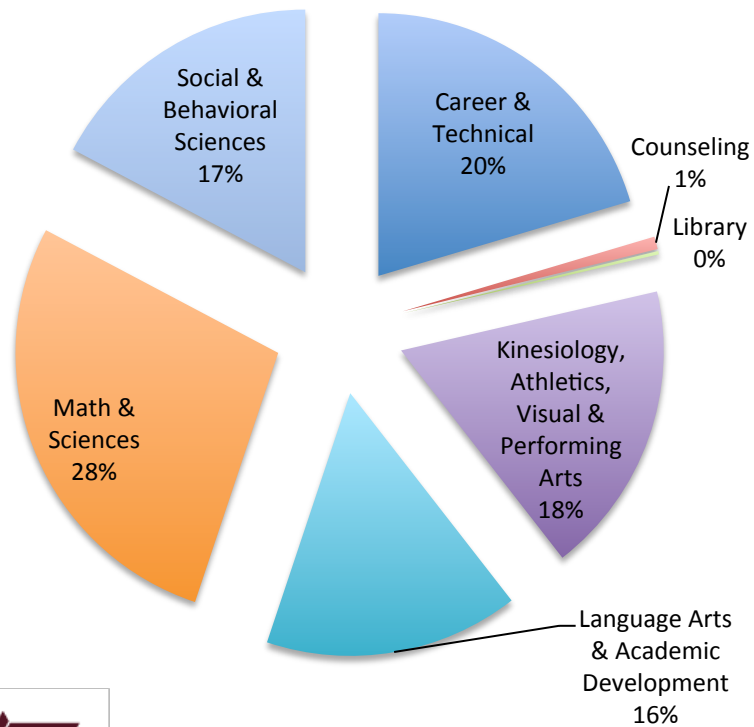
# Most Commonly Required\* Courses in 22 AD-Ts

<b>Course</b>	<b>Description</b>	<b>Total Programs</b>
MATH 115	Statistics	8
ANTH 102	Cultural Anthropology	5
ECON 101	Principles of Macroeconomics	4
MATH 150	Calculus & Analytic Geometry	4
MATH 160	Calculus & Analytic Geometry	4
MATH 250	Calculus & Analytic Geometry	3
GEOL 101	Physical Geology	3
HIST 101	Western Civilization to 1750	3
HIST 115	Cultural History of Mexico	3
PSY 101	General Psychology	3
SOC 101	Sociology	3

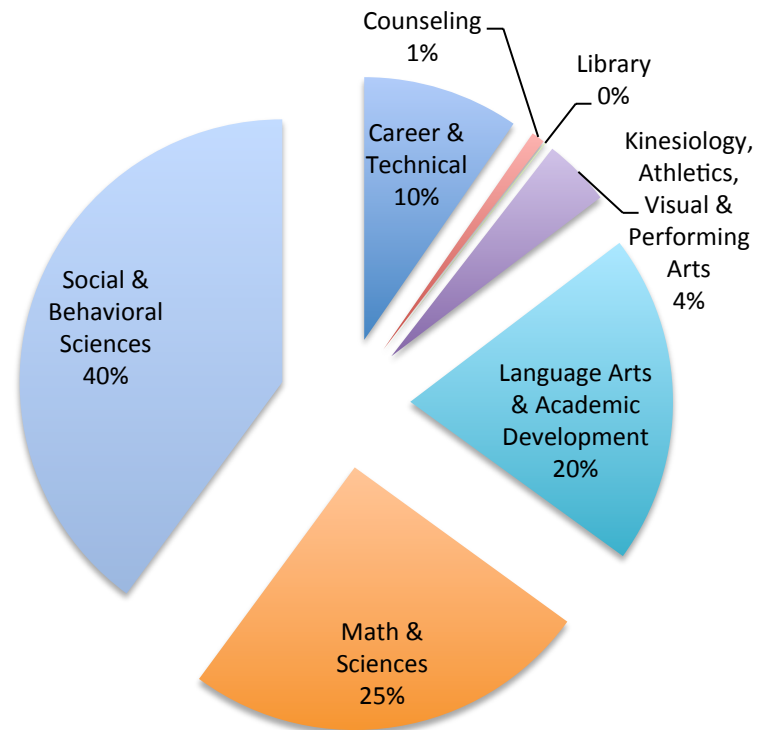
\*required as core or in a list of restricted electives

# Program of Instruction, Fall 2014 WSCH

## Lancaster



## Palmdale



# Fall 2014 Courses

Division	Nbr. Of Courses	
	Lancaster	Palmdale
Career & Technical	165	9
Counseling	4	1
Library	3	1
Kinesiology, Athletics, Visual & Performing Arts	164	4
Language Arts & Academic Development	66	15
Math & Sciences	71	12
Social & Behavioral Sciences	72	28
<i>Total</i>	<i>545</i>	<i>70</i>

**43 courses** out of 545 at Lancaster account for 50% of all enrollments

**2 disciplines** dominate the top 50% of enrollments- Math and English



# Scheduling Challenges

- Balancing
  - Facilities
  - Faculty
  - Weeks-duration
  - Days & time slots
  - Differing contact hours/units
- Conflicts are inevitable, some of which are illustrated on the following slides

# Lancaster, Fall 2014

## Scheduling Patterns & Rhythm

Period #	Period Times	# Full-term Classes		
		Monday and Wednesday	Tuesday and Thursday	Total
	starts before <8:00 am	9	2	11
<b>1</b>	<b>8:00-9:20 am</b>	<b>32</b>	<b>31</b>	<b>63</b>
	<i>8:00 -10:05 am</i>	<i>14</i>	<i>12</i>	<i>26</i>
	starts between 9:21-9:30 am	12	10	22
<b>2</b>	<b>9:30-10:50 am</b>	<b>52</b>	<b>46</b>	<b>98</b>
	<i>10:15 am-12:20 pm</i>	<i>14</i>	<i>16</i>	<i>30</i>
	starts between 10:45-11:00 am	8	6	14
<b>3</b>	<b>11:00 am-12:20 pm</b>	<b>49</b>	<b>51</b>	<b>100</b>
	starts between 11:00 am-12:29 pm	10	6	16
<b>4</b>	<b>12:30-1:50 pm</b>	<b>32</b>	<b>36</b>	<b>68</b>
	<i>12:30-2:35 pm</i>	<i>13</i>	<i>10</i>	<i>23</i>
	starts between 12:31-2:14 pm	8	10	18
<b>5</b>	<b>2:15-3:35 pm</b>	<b>24</b>	<b>17</b>	<b>41</b>
	starts between 2:16-3:44 pm	10	15	25
<b>6</b>	<b>3:45-5:05 pm</b>	<b>16</b>	<b>8</b>	<b>24</b>
	starts between 3:46-4:29 pm	3	8	11
	Totals	306	284	590
	<b>Percent in the primary periods</b>	<b>67.0%</b>	<b>66.5%</b>	<b>66.8%</b>
	<i>Percent in the secondary periods</i>	<i>13.4%</i>	<i>13.4%</i>	<i>13.4%</i>
	Percent out of the primary or secondary periods	19.6%	20.1%	19.8%



# Lancaster, Fall 2014

## Scheduling Patterns & Rhythm

	Single Day Meetings in Morning Prime Time						
	M	T	W	Tr	F	Sa	M-Sa Total
Total	16	7	7	5	33	22	90
% of M-Sa Total	15%	6%	6%	5%	30%	20%	
Total	16	7	7	5			M-Tr Total
% of M-Tr Total	41%	18%	18%	13%			35



# Lancaster, Fall 2014

## Scheduling Patterns & Rhythm

Period #	Period Times	# Full-term Classes		Total
		Monday and Wednesday	Tuesday and Thursday	
7	5:00 PM	8	10	18
7	5:15 PM	11	3	14
	starts between 5:16-5:59 pm	3	4	7
8	6:00 pm	8	8	16
	starts between 6:01-6:59 pm	1	0	1
9	7:00 pm	16	18	34
	starts >7:00 pm	7	6	13
	<i>Total</i>	<i>54</i>	<i>49</i>	<i>103</i>

# Lancaster, Fall 2014

## Scheduling Patterns & Rhythm

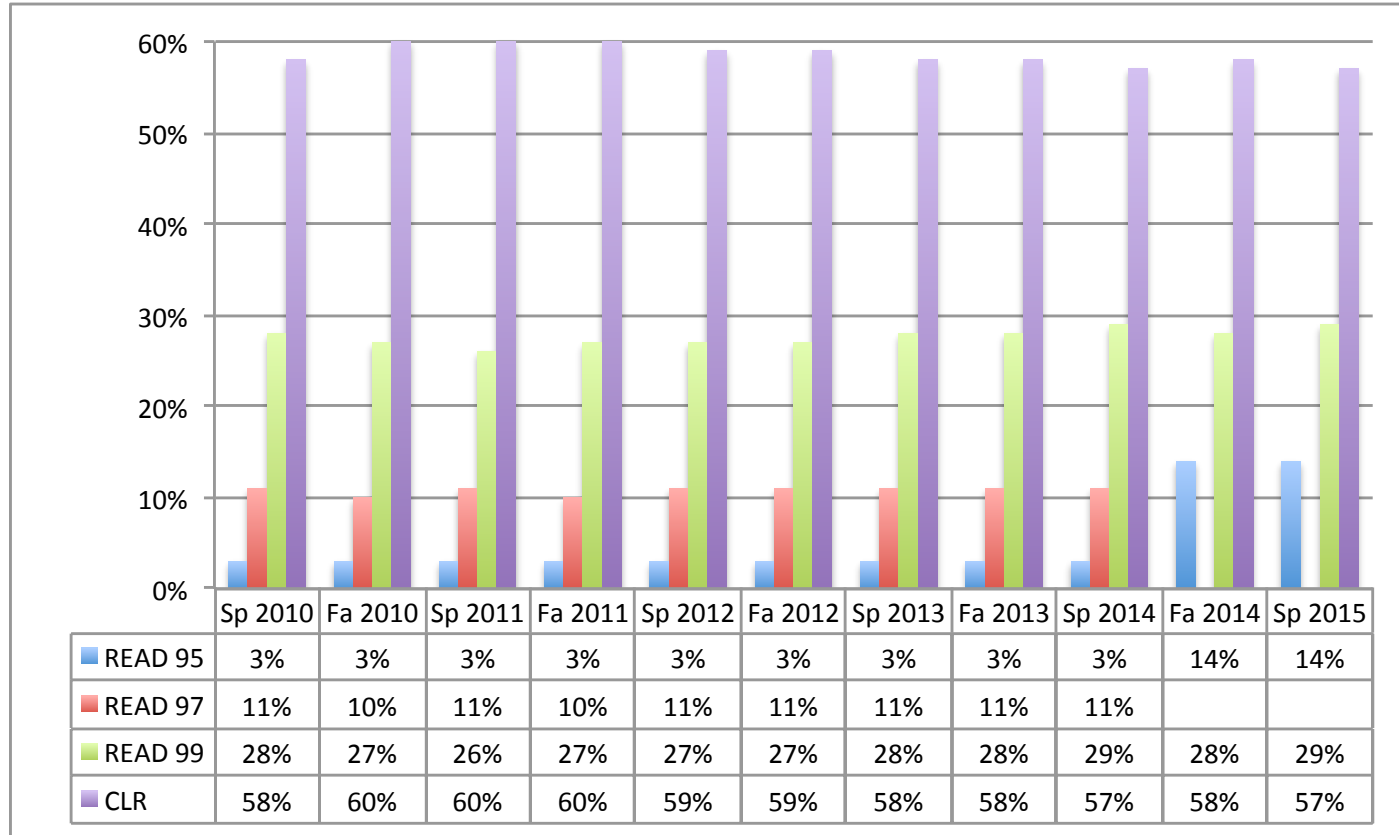
	Single Day Meetings in Evening Prime Time							
	M	T	W	Tr	F	Sa	Total	
Total	61	57	52	46	3	0	219	
% of M-Sa Total	28%	26%	24%	21%	1%	0%		
Starting Times	Count of Evening Sections by Starting Times							% of Total
4:30		1					1	0.5%
4:40			1				1	0.5%
5:00	4		1	1			6	2.7%
5:15	1						1	0.5%
5:30				1			1	0.5%
6:00	14	12	12	12	1		51	23.3%
6:15	2			4			6	2.7%
6:30		1					1	0.5%
7:00	40	43	38	28	2		151	68.9%
<b>Totals</b>	<b>61</b>	<b>57</b>	<b>52</b>	<b>46</b>	<b>3</b>	<b>0</b>	<b>219</b>	

# Fact Book

— 2015 —

- AVC Office of Institutional Effectiveness, Research, and Planning
  - Students Who Attend
    - Goals,
    - Gender
    - Age Ranges
    - Ethnicity
    - Unit Load
    - Time of Attendance

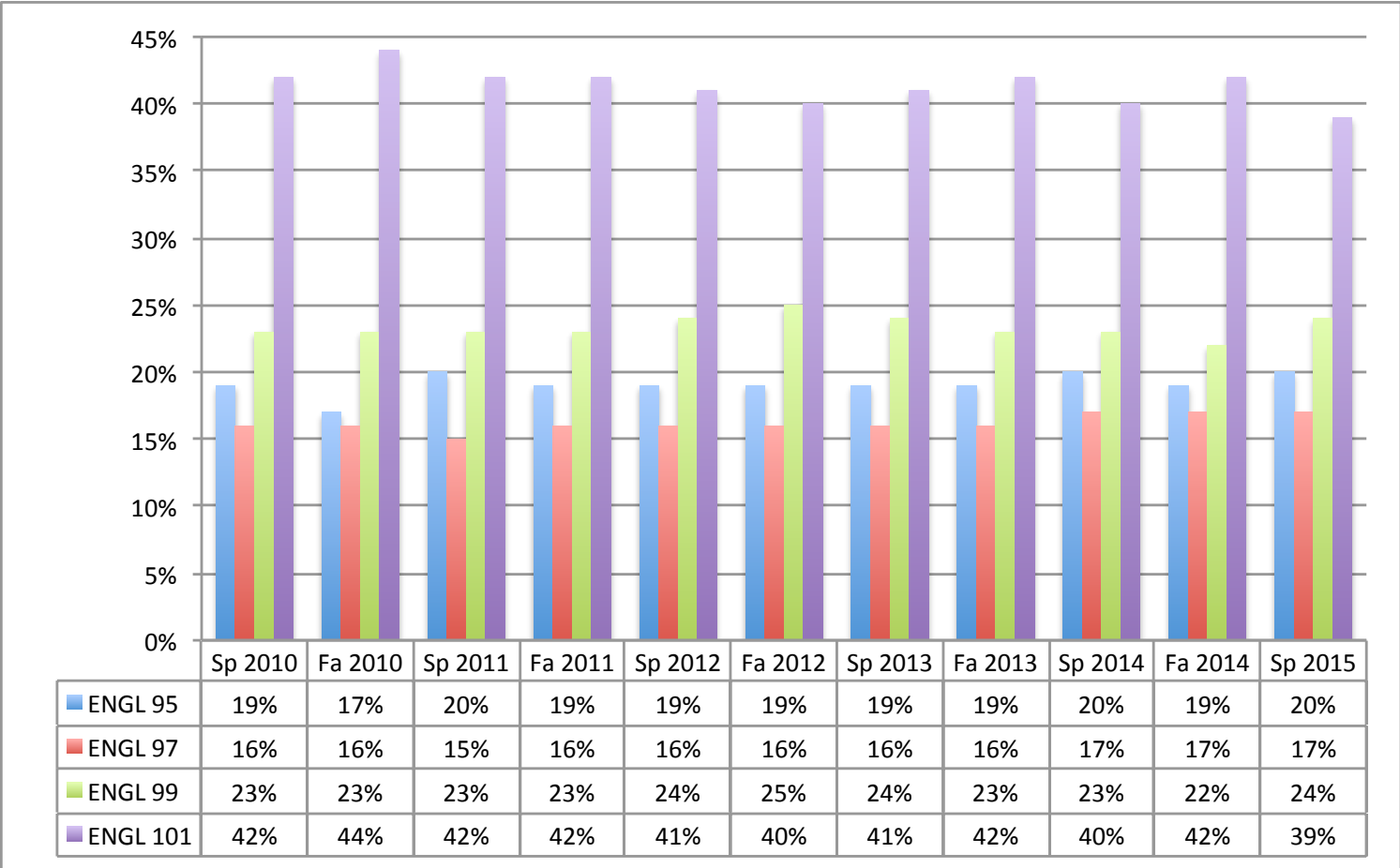
# Reading Placements 2010-15



46,600 student exams; on average 43% placed into basic skills level

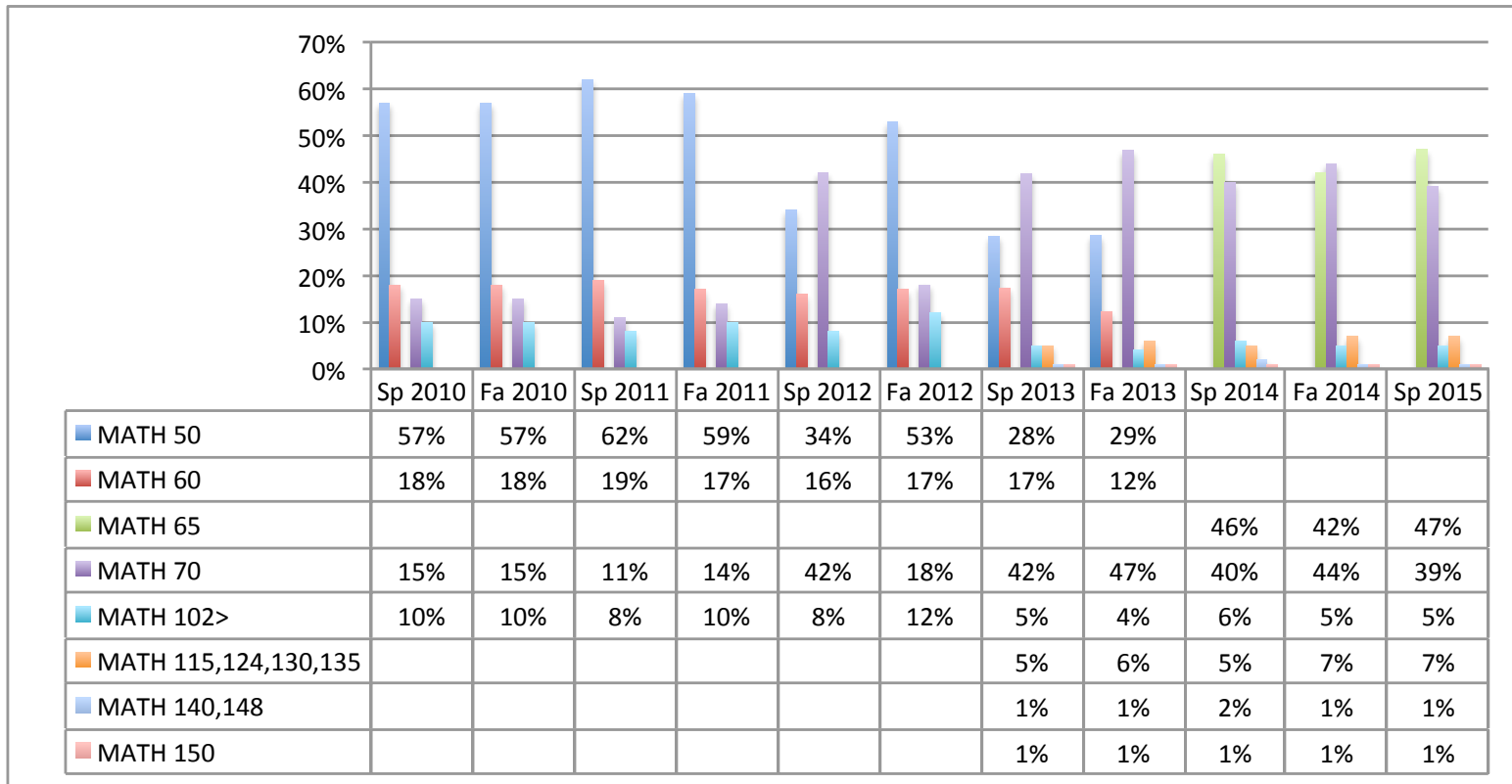


# Composition Placements 2010-15



44,200 student exams; on average 59% placed into basic skills

# Math Placements 2010-15



38,600 student exams; on average 86% placed into basic skills

# Give Your Math Faculty A Hug



# Live Out of District, Enrolled at Lancaster

Fall 2014 Out of District Enrollments at Lancaster								
Subj	Total	% of Total	Boron	California City	Edwards	Mojave	Tehachapi	Canyon Country
MATH	147	14%	1	45	9	26	56	10
ENGL	93	9%		29	6	16	40	2
BIOL	64	6%	2	24	4	5	26	3
HIST	49	5%	4	16	3	8	15	3
AJ	43	4%		20	1	10	9	3
BUS	34	3%		22		7	5	
KIN	32	3%	2	10	1	2	10	7
COMM	31	3%	1	8	3	2	17	
NS	31	3%	3	3		7	12	6
PHIL	31	3%		10	3	3	14	1
PSY	30	3%	1	12	2	4	11	
SOC	30	3%	4	9	1	3	11	2
HE	29	3%	2	14		4	8	1
CA	27	2%		18		5	3	1
POLS	27	2%		7	2	10	8	
DM	24	2%		12		6	4	2
MUS	21	2%		3	1	6	10	1
ART	20	2%		8		3	7	2
FTEC	19	2%	1	9			8	1
THA	17	2%		8	1	2	5	1



# Live Out of District, Enrolled at Palmdale

Subj	Total	% of Total	Fall 2014 Enrollments at Palmdale Center					
			Boron	California City	Edwards	Mojave	Tehachapi	Canyon Country
MATH	16	17%	1	8	2		4	1
HIST	12	13%		7		3	2	
ECON	9	10%		3		3	3	
POLS	8	9%		3		1	4	
AERO	5	5%		1		4		
BIOL	4	4%		1			3	
CFE	4	4%				1	1	2
ENGL	4	4%		2	1		1	
PSY	4	4%		2			2	
SOC	4	4%		3			1	
FTEC	3	3%	1	1			1	
GEOG	3	3%		1			2	
NF	3	3%		1		1	1	
PHIL	3	3%	1	2				
COMM	2	2%		1				1
ENGL	2	2%					2	
GEOL	2	2%		1				1

# Fact Book

— 2015 —

- AVC Office of Institutional Effectiveness, Research, and Planning
  - Institutional Effectiveness
    - Student Success Scorecard
      - Basic Skills Progression
      - Success & Retention
    - Awards & Transfers
      - Awards
      - Transfers
      - License Examination Scores
      - Salary Surfer
    - Peer Institutions

# AVC Planning Resource Examples

- Student Equity Plan (December 2014)
- Student Success and Support Program Plan (2014)
- Enrollment Management Planning
- Basic Skills Goals (2012-17) & Action Plans
- CTE Perkins Plans
- Title V Grants
- Program Review Process
- Technology Master Plan 2014-17

# Coming Attractions

- Group Interviews (February)
- Projections of Future Weekly Student Contact Hours (WSCH) (March)



# Educational Master Plan

Planning Assumptions  
February 17, 2016

# Planning Assumptions List

- Questions or clarifications on list items?
- Additional topics/themes to add to the list?
- Sense of priorities among the list items?

What have goals got to do with all this?

# Antelope Valley Community College District 2013-16 Educational Master Plan Overview

