



ANTELOPE VALLEY COLLEGE

Notes from the Researchers

- Volume 2 – March 2010

Recent Projects from the Office of Institutional Research and Planning

Research for: Basic Skills

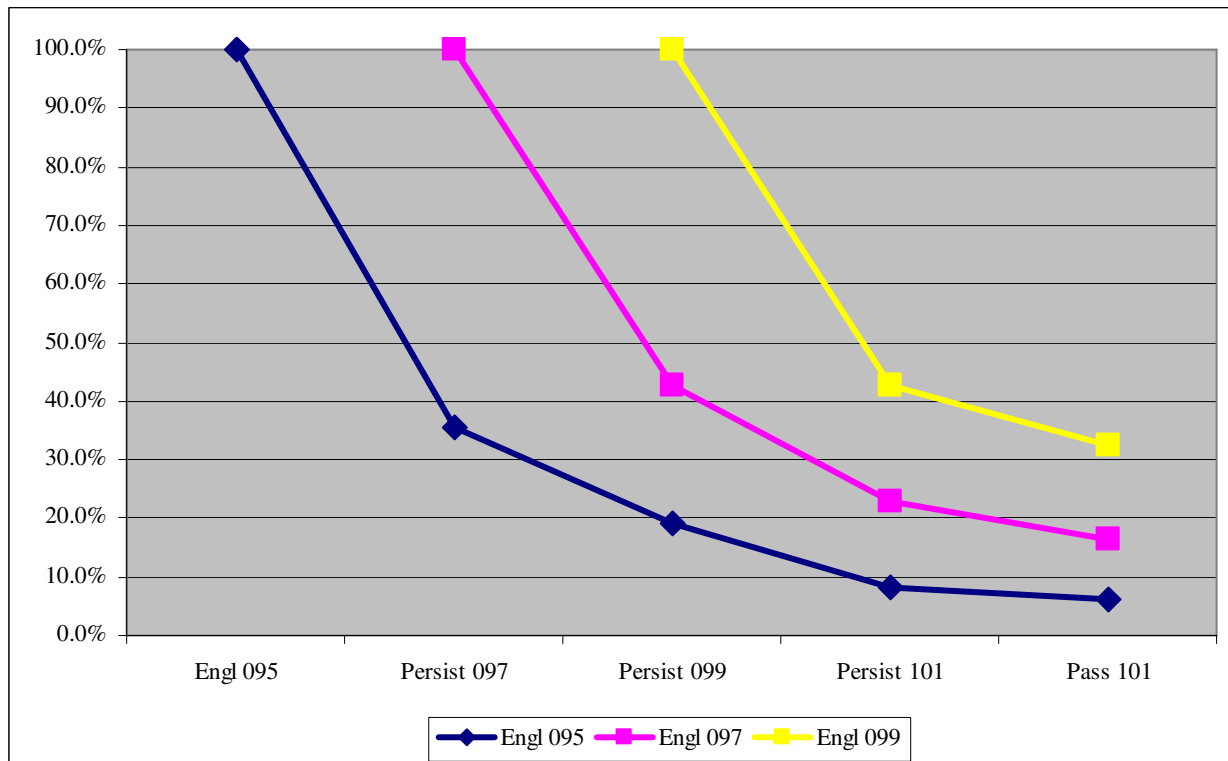
Research Lead: Aeron Zentner

I completed a cohort study for first-time students who assessed into ENGL 095, 097 or 099 and followed their persistence over three years at Antelope Valley College to measure their success rate in moving through the Basic Skills English cycle. The charts below indicate that out of the first time students who assessed into 095 only 6.2% passed through the cycle and completed ENGL 101 successfully. Additionally, students who assessed into ENGL 097 had 16.5% completion rate and ENGL 099 with a 32.5% rate.

ENGL 095	ENGL 097	ENGL 099	ENGL 101	Passed	Success in 101	Percent success in 101
146	52	28	12	9	75%	6.2%

ENGL 097	ENGL 099	ENGL 101	Passed	Success in 101	Percent success in 101
339	145	77	56	73%	16.5%

ENGL 099	ENGL 101	Passed	Success in 101	Percent success in 101
265	113	86	76%	32.5%



For additional information on this or other projects, contact the research office at ext. 6398.



ANTELOPE VALLEY COLLEGE

Notes from the Researchers

- Volume 2 – March 2010

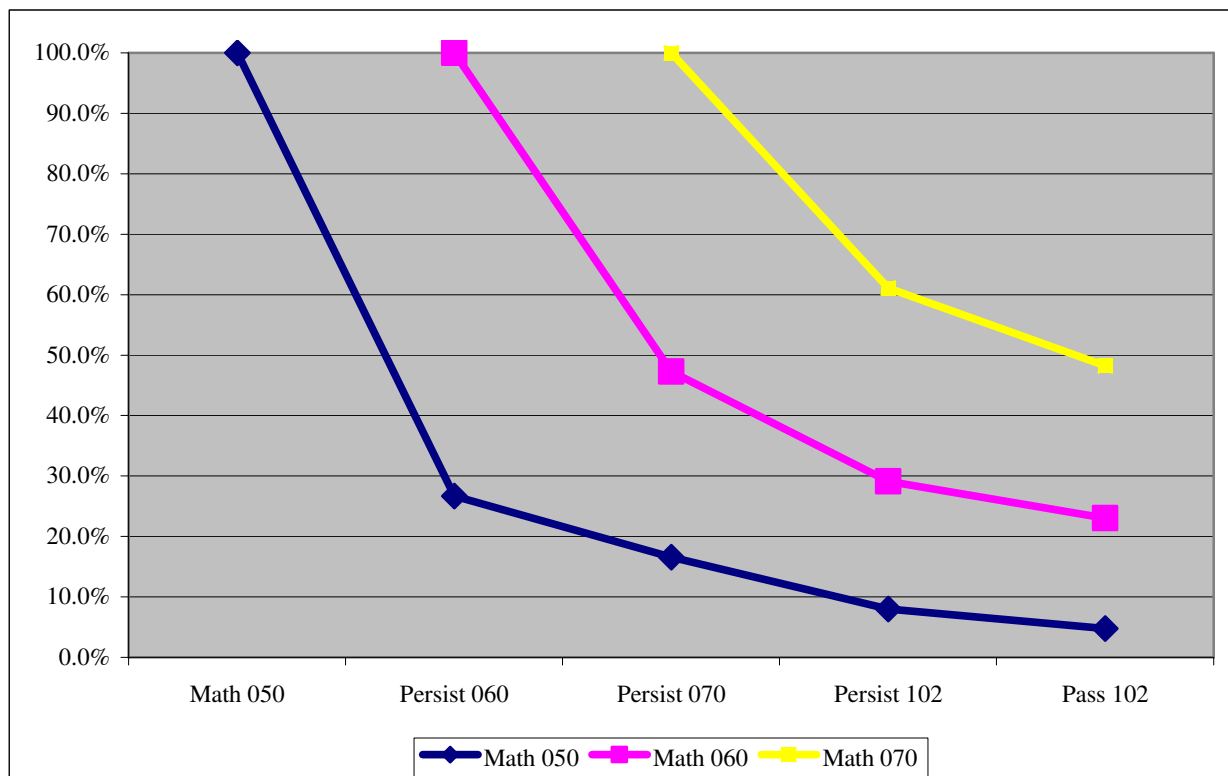
Recent Projects from the Office of Institutional Research and Planning

I completed a cohort study for first-time students who assessed into MATH 050, 060 or 070 and followed their persistence over three years at Antelope Valley College to measure their success rate in moving through the Basic Skills math cycle. The charts below indicate that out of the first time students who assessed into 050 only 4.8% passed through the cycle and completed MATH 102 successfully. Additionally, students who assessed into MATH 060 had 23.0% completion rate and MATH 070 with a 48.2% rate.

MATH 050	MATH 060	MATH 070	MATH 102	Passed	Success in 102	Percent success in 102
900	240	149	72	43	60%	4.8%

MATH 060	MATH 070	MATH 102	Passed	Success in 102	Percent success in 102
165	78	48	38	79%	23.0%

MATH 070	MATH 102	Passed	Success in 102	Percent success in 102
280	171	135	79%	48.2%



For additional information on this or other projects, contact the research office at ext. 6398.